

200 B^b Jazz Band Audition

(MIDI SHINE) I'M BEGINNING TO SEE THE LIGHT
-DON GEORGE/JIMMY HODGES DUT - ELLINGTON/HARRY JAMES


A A⁶ D-⁶ A⁶ F#⁷ B⁷ E⁷ C-⁷ F⁷



A⁶ G#⁷ G⁷ F#⁷ B⁷ E⁷ | 1. A B-⁷ E⁷ | 2. A




B C#⁷ C⁷



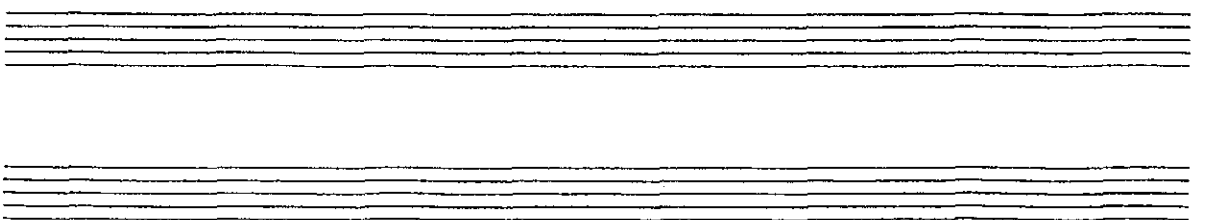
B⁷ C-⁷ F⁷ B-⁷ E⁷



A A⁶ D-⁶ A⁶ F#⁷ B⁷ E⁷ C-⁷ F⁷



A⁶ G#⁷ G⁷ F#⁷ B⁷ E⁷ A (B-⁷ E⁷)



E♭ Jazz Band Audition

200

(MEL. SWINGS) I'M BEGINNING TO SEE THE LIGHT
- DUKE GEORGE / JOHNNY HEDGES / DUKE ELLINGTON / HARRY JAMES

A E⁶ A-⁶ E⁶ C^{#7} F^{#7} B⁷ G-⁷ C⁷

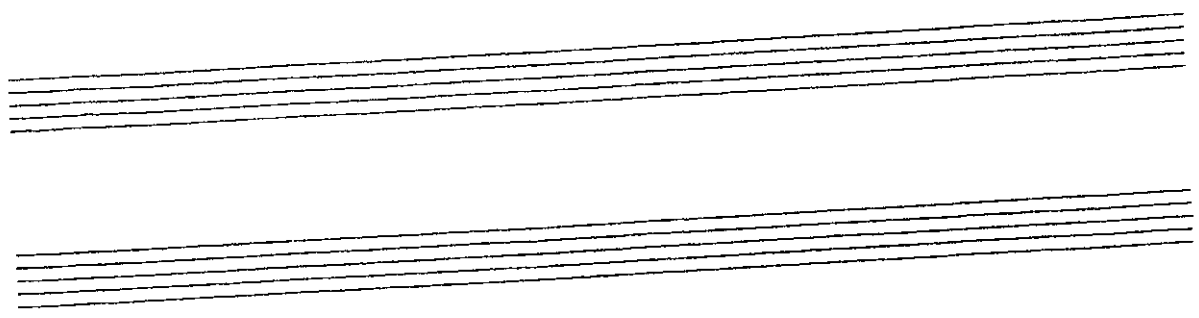
E⁶ D^{#7} D⁷ C^{#7} F^{#7} B⁷ | 1. E F^{#-7} B⁷ | 2. E

B G^{#7} G⁷

F^{#7} G-⁷ C⁷ F^{#-7} B⁷

A E⁶ A-⁶ E⁶ C^{#7} F^{#7} B⁷ G-⁷ C⁷

E⁶ D^{#7} D⁷ C^{#7} F^{#7} B⁷ E (F^{#-7} B⁷)



(MED. SWING) I'M BEGINNING TO SEE THE LIGHT

- DON GEORGE / JOHNNY HODGES / DUKE ELLINGTON A / HARRY JAMM

A G⁶ C⁻⁶ G⁶ E⁷ A⁷ D⁷ B^{b-7} E^{b7}

G⁶ F#⁷ F⁷ E⁷ A⁷ D⁷ | G A-7 D⁷ | 2.G

B B⁷ B^{b7}

A⁷ B^{b-7} E^{b7} A-7 D⁷

A G⁶ C⁻⁶ G⁶ E⁷ A⁷ D⁷ B^{b-7} E^{b7}

G⁶ F#⁷ F⁷ E⁷ A⁷ D⁷ G (A-7 D⁷)

(Med.)
(Solo)

I'M BEGINNING TO SEE THE LIGHT

- DON GEORGE / JOHNNY HODGES / DUKE ELLINGTON / HARRY JAMES

A

G^b C-^b G^b E⁷ A⁷ D⁷ B^b-⁷ E^b⁷

G^b F[#]⁷ F⁷ E⁷ A⁷ D⁷ | 1. G A-⁷ D⁷ | 2. G

B

B⁷ B^b⁷

A⁷ B^b-⁷ E^b⁷ A-⁷ D⁷

A

G^b C-^b G^b E⁷ A⁷ D⁷ B^b-⁷ E^b⁷

G^b F[#]⁷ F⁷ E⁷ A⁷ D⁷ G (A-⁷ D⁷)