



## Forest HS Jazz Auditions

Hello,

We are very excited that you are considering the Jazz Ensemble at Forest HS. You will find a packet of wind and brass auditions parts for the upcoming school year attached to the paper. Choose the part that fits your instrument (Eb for Alto and Bari sax, Bb for Tenor sax and trumpet, Bass Clef for trombone and String Bass, Treble Clef for Guitar, Piano, and Vibraphone). If you are planning to audition on Drum set, please contact Mr. Jones for separate information. The piece, *I'm Beginning to See the Light*, should be played in a swing style and performed from beginning to end one time through. If improvising, improv should be done on a second time through of the A section after completing a full play through of the written piece of the piece. **Improv is not required for the audition but is encouraged and does add to your overall score.**

Incoming 8<sup>th</sup> graders are encouraged to ask their directors for help with this audition. Current FHS Students are encouraged to work with current Jazz Students. A backing track will be used for this audition and can be found at our Band Website under Member Resources.

An Audition Night is scheduled for Friday May 12<sup>th</sup>. Please get with me to schedule your audition time. I can be reached by email at [david.jones2@marion.k12.fl.us](mailto:david.jones2@marion.k12.fl.us) or by phone at 352-671-4707.

If you have questions, please do not hesitate to ask. We look forward to seeing you on May 12<sup>th</sup>.

Regards,

A handwritten signature in black ink, appearing to read "David Jones", with a long, sweeping horizontal line extending to the right.

David Jones  
Band Director  
Forest High School

200

# B<sup>b</sup> Jazz Band Audition

## (MELODY) I'M BEGINNING TO SEE THE LIGHT

-DON GEDRGE/JOHN RODGERS DUL- ELLINGTON/HARRY JAMES

Handwritten musical score for a jazz band audition, featuring the melody of "I'm Beginning to See the Light". The score is written on a single staff with a key signature of one flat (B<sup>b</sup>) and a 4/4 time signature. The melody is written in treble clef. The score includes several measures of music, with some measures marked with a repeat sign. The score is divided into sections labeled A, B, and C. The key signature is B<sup>b</sup> (one flat).

Section A: A<sup>b</sup> D<sup>-b</sup> A<sup>b</sup> F#7 B7 E7 C-7 F7

Section B: A<sup>b</sup> G#7 G7 F#7 B7 E7 | A B-7 E7 | 2. A

Section C: C#7 C7

Section D: B7 C-7 F7 B-7 E7

Section E: A<sup>b</sup> D<sup>-b</sup> A<sup>b</sup> F#7 B7 E7 C-7 F7

Section F: A<sup>b</sup> G#7 G7 F#7 B7 E7 A (B-7 E7)



Score Book Addition

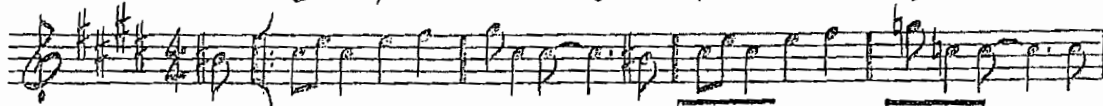
200

(MED. SWING)

# I'M BEGINNING TO SEE THE LIGHT

- DAVE GEORGE / JOHNNY HEDGES / DUKE ELLINGTON / HARRY JAMES

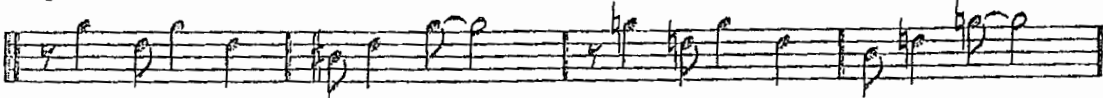
[A] E<sup>b</sup> A-<sup>b</sup> E<sup>b</sup> C<sup>#</sup>7 F<sup>#</sup>7 B<sup>7</sup> G-<sup>7</sup> C<sup>7</sup>



E<sup>b</sup> D<sup>#</sup>7 D<sup>7</sup> C<sup>#</sup>7 F<sup>#</sup>7 B<sup>7</sup> |<sup>1.</sup> E F<sup>#</sup>-<sup>7</sup> B<sup>7</sup> |<sup>2.</sup> E



[B] G<sup>#</sup>7



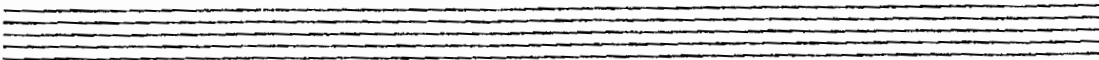
F<sup>#</sup>7



[A] E<sup>b</sup> A-<sup>b</sup> E<sup>b</sup> C<sup>#</sup>7 F<sup>#</sup>7 B<sup>7</sup> G-<sup>7</sup> C<sup>7</sup>



E<sup>b</sup> D<sup>#</sup>7 D<sup>7</sup> C<sup>#</sup>7 F<sup>#</sup>7 B<sup>7</sup> E (F<sup>#</sup>-<sup>7</sup> B<sup>7</sup>)



200 **C** Instruments

(MED SWING) **I'M BEGINNING TO SEE THE LIGHT**

— DON GEORGE / JOHNNY HODGES / DUKE ELLINGTON / HARRY JAM

**A** G<sup>6</sup> C<sup>-6</sup> G<sup>6</sup> E<sup>7</sup> A<sup>7</sup> D<sup>7</sup> B<sup>b-7</sup> E<sup>b7</sup>

G<sup>6</sup> F#<sup>7</sup> F<sup>7</sup> E<sup>7</sup> A<sup>7</sup> D<sup>7</sup> 1. G A-<sup>7</sup> D<sup>7</sup> 2. G

**B** B<sup>7</sup> B<sup>b7</sup>

A<sup>7</sup> B<sup>b-7</sup> E<sup>b7</sup> A-<sup>7</sup> D<sup>7</sup>

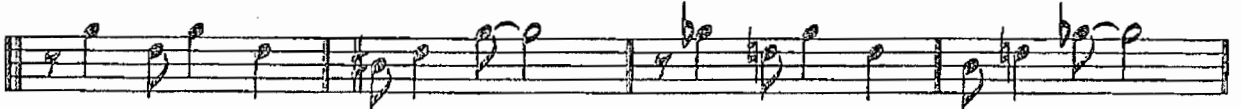
**A** G<sup>6</sup> C<sup>-6</sup> G<sup>6</sup> E<sup>7</sup> A<sup>7</sup> D<sup>7</sup> B<sup>b-7</sup> E<sup>b7</sup>

G<sup>6</sup> F#<sup>7</sup> F<sup>7</sup> E<sup>7</sup> A<sup>7</sup> D<sup>7</sup> G (A-<sup>7</sup> D<sup>7</sup>)

200

**Bass** Claf. Instruments**I'M BEGINNING TO SEE THE LIGHT**

- LON GEORGE / JOHNNY HODGES / DUKE ELLINGTON / HARRY JAMES

**A**G<sup>b</sup> C-<sup>b</sup> G<sup>b</sup> E<sup>7</sup> A<sup>7</sup> D<sup>7</sup> B<sup>b</sup>-<sup>7</sup> E<sup>b</sup><sup>7</sup>G<sup>b</sup> F#<sup>7</sup> F<sup>7</sup> E<sup>7</sup> A<sup>7</sup> D<sup>7</sup> 1. G A-<sup>7</sup> D<sup>7</sup> 2. G**B**B<sup>7</sup>B<sup>b</sup><sup>7</sup>A<sup>7</sup>B<sup>b</sup>-<sup>7</sup>E<sup>b</sup><sup>7</sup>A-<sup>7</sup> D<sup>7</sup>**A**G<sup>b</sup> C-<sup>b</sup> G<sup>b</sup> E<sup>7</sup> A<sup>7</sup> D<sup>7</sup> B<sup>b</sup>-<sup>7</sup> E<sup>b</sup><sup>7</sup>G<sup>b</sup> F#<sup>7</sup> F<sup>7</sup> E<sup>7</sup> A<sup>7</sup> D<sup>7</sup> G (A-<sup>7</sup> D<sup>7</sup>)